



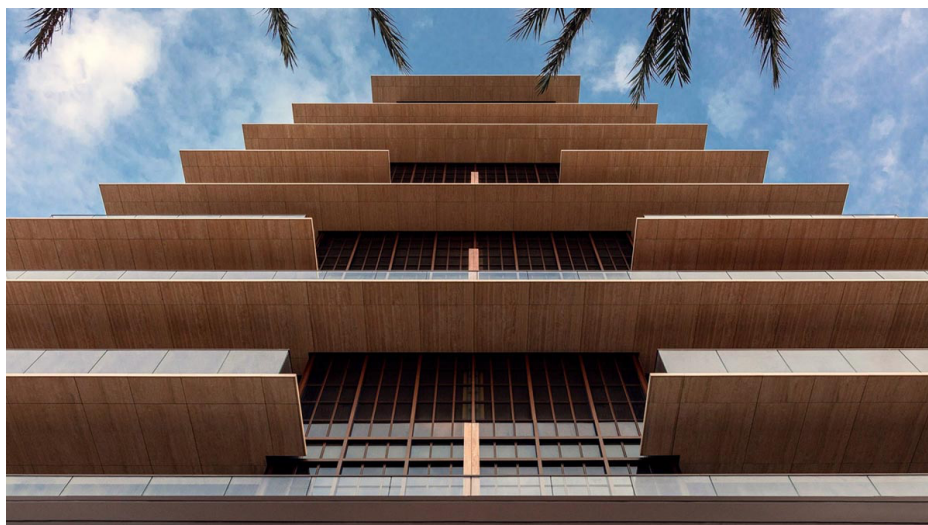
Antonio Citterio Patricia Viel Built New Condominium That Features Extruded Horizontal Terraces

United States Architecture News - Jun 5, 2020 - 14:58  977 Views



Milan-based architecture practice [Antonio Citterio Patricia Viel](#) has added a new condominium to Miami's beachfront, featuring thin extruded horizontal terraces—are stacked in a visionary but also highly functional way.

Called [Arte](#), the 12-storey residential tower is located between Collins Avenue and Atlantic Way, featuring 16 residential apartments and other amenities.



The firm, led by Antonio Citterio and Patricia Viel, developed the project with Miami-based firm [Kobi Karp Architecture and Interior Design](#) to implement the interiors that maintain the soul of the whole architecture.

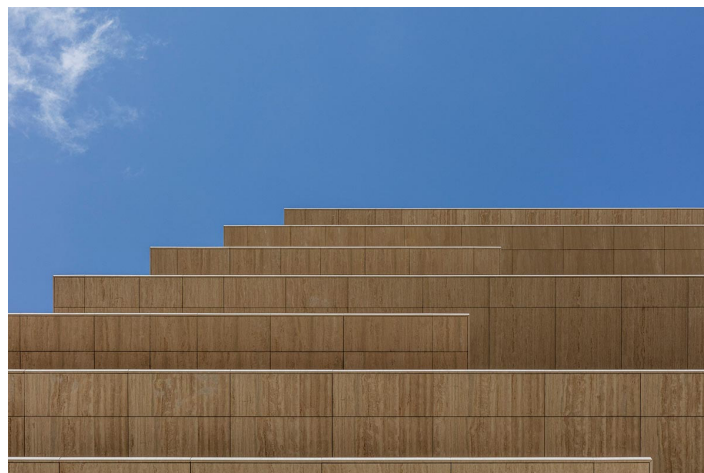
Arte, described as "sculptural" and "iconic" in the skyline, is the first project of the firm in the US.

The 9,800-square-metre residential building consists of 16 residential apartments with related amenities.



"They create exceptional outdoor spaces and lounge areas, extending the exquisite interior design to the outside. Its architectural expression is floating and light, perfectly adapted to the location," said Antonio Citterio Patricia Viel.

"Alluding to historical precedents in Miami-Dade & Surfside, exquisite materials such as natural stone, bronze colored finishes, and glass create a contemporary and highly sophisticated environment."

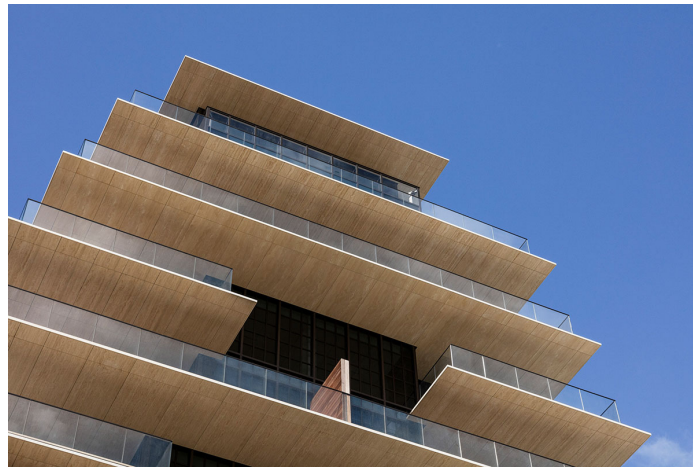


Antonio Citterio Patricia Viel draws inspiration from classic European apartments of the 1920s and '30s and combines architectural virtuosity with a purist sensibility, weaving a richly layered world of tactile wonder.

Each highly individual residence is designed to maintain privacy between entertaining areas and bedrooms. Soaring floor-to-ceiling glass windows allow the flow of abundant natural light and frame the prized views of the Atlantic Ocean and Miami skylines.



The terraces are perceived as thin floor slabs from afar, and glazed balcony railings seem invisible and mark the terraces. The sequence of the terraces becomes narrow towards the top and becomes wider in the ground floor level.



"The requirements of the site area are balanced by the symmetrical stacking of the building components articulated around the central east-west axis," added the architects.

"These elements are extruded along the length of the building and represent themselves in an almost identical way on the east elevation as they do on the west."

"Arte keeps the complexity of an urban building located in a historical context while providing wide and open views to the ocean."

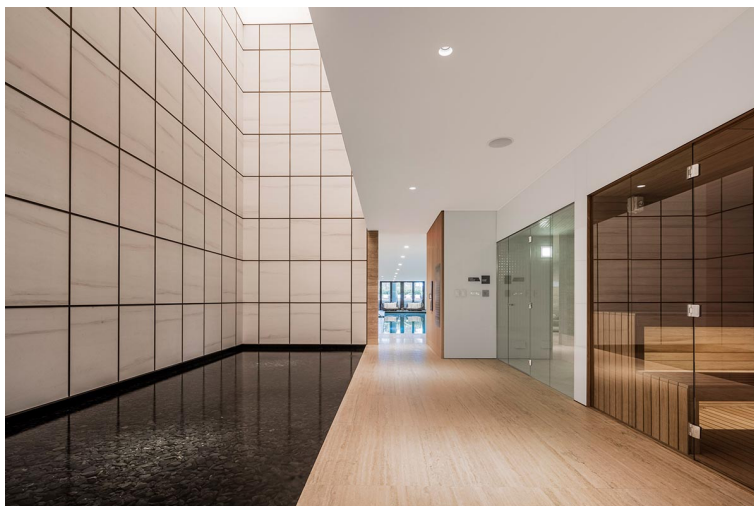


The discreet lobby is furnished with pieces designed by Antonio Citterio along with the entry's centerpiece, Polychromatic Chronology 2016, by famed artist [Olafur Eliasson](#).

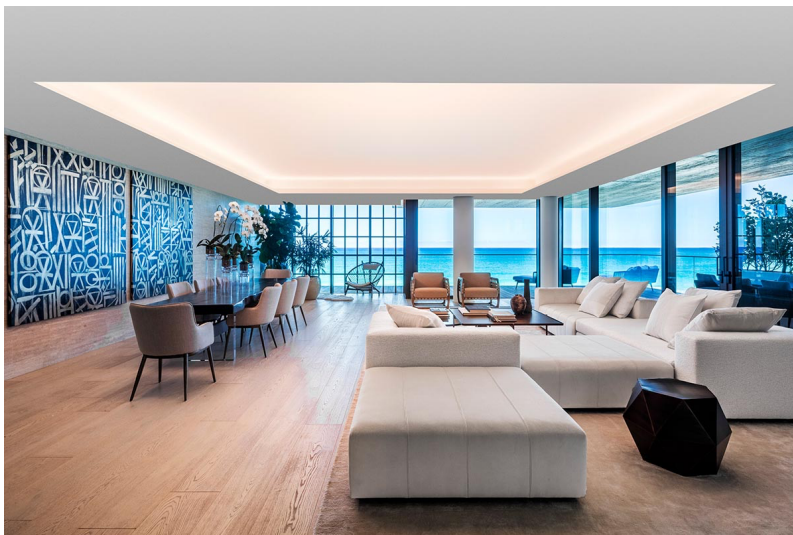
The architects worked with [Hallock Design](#) to furnish a model unit. Set in a dark and moody atmosphere, the interior materials include travertine in the bathroom, black-color tiling, marble in the kitchen and wood-panelled walls.



Amenities and services building covers 4,475-square-metre area in the West building, including outdoor swimming pool, beachfront meditation pond, yoga studio, lounges, fitness centre and sauna room.











Antonio Citterio Patricia Viel worked with landscape architecture firm [Enzo Enea](#) on the project.

Antonio Citterio started his design practice in 1972 and in 2000s he founded Antonio Citterio Patricia Viel with Patricia Viel, the firm is a cross-disciplinary practice for architecture and interior design based in Milan.

All images © [Kris Tamburello](#), courtesy of Arte.